

KLOVERLEAF

Happy Thanksgiving

KHA Scheduled Holidays & Upcoming Events

Your Association's staff is available Monday through Friday from 8:30 am to 4:00 pm. *The KHA Board of Directors meeting will be held at 7pm in the conference room of the association office located at 2705 Killarney Way. Residents are invited and welcome.*

Thur & Fri, Nov. 22 & 23, 2018 - Thanksgiving, KHA Office Closed

Tue., Dec. 4, 2018 - Board of Directors Meeting

Mon - Wed, Dec 24 - 26, 2018 - Christmas, KHA Office Closed

Tue., Jan. 1, 2019 - New Year's Day, KHA Office Closed

Tue., Jan. 8, 2019 - Board of Directors Meeting

.....
Apply for tree removals, exterior alterations
and report property issues

 **894-3085** 

Denny Alexander,
Compliance Coordinator

.....


DOWNLOAD
SEARCH FOR "KHA KILLEARN"

GET IT ON  **Google play**

 Available on the **App Store**

OUR COMMUNITY APP

ALL REMODELING

 **Worley**
Your Favorite Builder

Mark Worley, President, GMB, CAPS

850.528.0954 WorleyConstructionInc.com Lic C00062957

BOARD OF DIRECTORS

David Ferguson
President

Gloria M. Arias
Vice President

Michael Flemming
Secretary

Phil Inglese
Treasurer

John Paul Bailey

Charles Faircloth

Michael Flemming

Stephen Grimes

Bill Schack

Will Messer

Bob Ippolito
President Emeritus

ASSOCIATION STAFF

Diane Allewelt
Interim Association Manager

Denny Alexander
Compliance Coordinator

Debbie Patterson
Fiscal Assistant

PUBLISHER

Killearn Homes Association

EDITOR

Diane Allewelt

GRAPHIC DESIGN

Target Print and Mail

ADVERTISING

850/893-3468
kha@killearn.org

AD DESIGN

850/671-6600
hello@targetprintmail.com

ASSOCIATION OFFICE

Killearn Cloverleaf™ is published monthly
(12 issues/yr.)

by Killearn Homes Association
2705 Killarney Way,
Tallahassee, FL 32309

850/893-3468 FAX 850/668-0530

POSTMASTER: Send address changes to:
Killearn Homes Association
2705 Killarney Way
Tallahassee, FL 32309

Copyright © 2018. All rights reserved.

Community Highlights

10/1 - 11/30: Second Harvest Food Drive donations accepted at KHA Office

10/25: Delivery and installation of 250 grass carp

11/1 - 12/17: TOYS FOR TOTS DRIVE donations accepted at KHA Office

11/6: Annual Membership Meeting

12/14: Deadline for Entry for the Annual Griswold Decorating Contest

Contents

Briefs

Association Manager
Message 4

Around Town 6

Hospice 8

Food Drive 9

Why Roundabouts 10

Home & Garden

Next Month's Garden 16



Business

Home Sales 17

Profit & Loss 18

ACC Actions 19

Feature Story:

12 Thanksgiving Recipes



Association Manager Message

Thanksgiving.....what does that mean to you? For me, it's just a date on the calendar where we gather with family and close friends and regret eating so much after the meal. I practice gratitude everyday, in fact almost all day long.....I am saying thank you for just about everything, even my ability to type this message. Speaking of gratitude, I must mention how lucky we all are, even with the damage that was left behind from Hurricane Michael, we are lucky to look forward to another holiday season. I am also grateful to each of you for choosing this beautiful community to call home.

When you are shopping for your big meal, please remember to pick up one or several extra items for our Second Harvest food drive, now more than ever they need our help! We are collecting items through November 30th and may continue indefinitely due to the large need west of us.

Let me also take this time for a second request to remove your yard sale signs after the weekend. It's that time of year to sell unwanted items and advertising is okay after 4pm on Friday, but when your sale is over please remove the signs. Since the election is now over we should see a large decrease in any unlawful signage in the neighborhood as well.

The Annual Membership meeting was a big success, even with the storm that evening. Many of you took the time to join us at Killearn United Methodist Church to discuss your ideas and suggestions for the community. Every year we gather as members to discuss important

issues. This is usually held at our neighborhood church on the first Tuesday of November. If you did not attend, please feel free to email me at diane@killearn.org with your concerns and comments, and mark your calendars in 2019.

Speaking of 2019, I cannot believe there is only ONE more issue of our newsletter for the year. If you have any ideas for upcoming issues, feel free to contact the office at 893-3468 or email me anytime! 🍀

Diane Allewelt

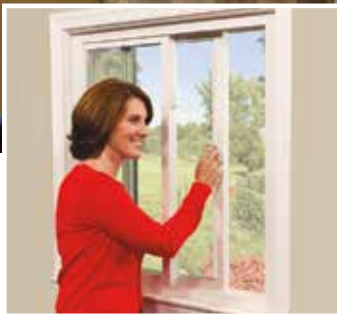


President's Message

First, I wish to "Thank" all of the residents who braved the stormy weather to attend our Annual Resident's Meeting on November 6th at Killearn United Methodist Church. It was a rainy evening but we had a good meeting. Killearn is a beautiful community in every respect and I look forward to all of us working together to keep it so. In closing, Have A Great Thanksgiving! 🍀

- David Ferguson
President

WINDOW WORLD

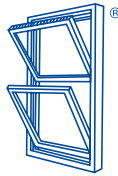


Stylish OPTIONS FOR YOUR HOME

More Americans choose Window World® than any other replacement window company. Locally, we install over 9,000 energy-efficient windows each year, all at a guaranteed low price. Not only do we provide first-class windows and sliding glass doors, but we are proud to offer energy-efficient products with the mission of exceptional customer care and the attention to detail you've come to expect from Window World. Come join our family of satisfied customers!



Window World



"Simply the Best for Less"

(850) 562-8800

1413 Maclay Commerce Dr, Tallahassee, FL

www.TallahasseeWindows.com

Visit Our Beautiful Showroom!

This Window World® is locally owned and operated.

**Subject to credit approval. See store for details.

- FREE In-Home Estimate
- ENERGY STAR® Certified Products
- Made in the USA
- Industry's Strongest Lifetime Limited Warranty*
- 0% Financing Available**



Seal applies to windows only



NAT-XXXXX



"Not only do we stand behind our windows, we stand on them!"



**Bowles
ROOFING**

Re-Roofing & Repairs

(850) 575-6060

Fax: (850) 575-0421

25+ Years in Business A+ Rating from BBB

WWW.BOWLESROOFINGCO.COM

Killearn
United Methodist Church

2800 Shamrock Street, South
Tallahassee, FL 32309
850-893-1116 KillearnUMC.org

THE LIVING CHRISTMAS STORY

December 7, 8 & 9 at 6:30 PM FREE EVENT

Mayflower

*Her sweet face, glowing and ever radiant
roseate as a mimosa in May
flourishing in the winsome sunshine-----*

*Her heart reverent, yet impassioned;
ruminating, nearly skipping a beat.....*

*Frozen in time, melting with every
beautiful memory that will carry her
through life's tender triumphs
and trepidations-----*

*Her eager reflective mind, apprehensive
a dim mirror of nostalgia, a
bright window of anticipation!*

*Reeling with mixed emotions
dauntless, yet still afraid.....*

*This young fragile girl
with fledgling spirit
and nuances of hope-----*

*Heart and soul transformed,
tear-filled eyes transfixed.....*

*This endearing precious daughter
escapes her strange yet wondrous
adolescence and today,
somehow becomes a woman.*

Mark J Hollister 





ANNUAL DECORATING CONTEST!

~ Hello Griswolds of Killlearn Estates! ~

It's that time of year again!

Enter our contest for a chance to win some Holiday CASH.

Five lucky favorites will be selected from those who enter.

Here's how to enter: Provide your name and address to the KHA office in one of the following ways:

- Call the KHA office 893.3468 (leave a voicemail if after hours)
- Email your entry to kha@killlearn.org
- Fax your entry to 850.668.0530
- Drop off your entry at 2705 Killarney Way

Deadline: Noon on Friday December 14, 2018



We would also appreciate you emailing digital photos of your display to place in the Kloverleaf if you are one of the lucky Griswolds selected. Capture that perfect photo of your display!!

Good Luck Griswolds...
REMEMBER, it pay\$ TO DECORATE!!



CHRISTMAS TREES & WREATHS SALE

KILLEARN UNITED METHODIST CHURCH
2800 SHAMROCK STREET SOUTH
NOV 23RD - DEC 14TH
WHILE SUPPLIES LAST

BRING THIS KLOVERLEAF AD TO RECEIVE A
\$5 DISCOUNT ON THE PURCHASE OF A TREE

HOURS: SUNDAYS NOON - 6PM
MON-FRI 4PM - 9PM
SATURDAYS 9AM - 9PM

SUPPORT YOUR LOCAL
BOY SCOUT TROOP #23

INSURANCE
EXPECT SOMETHING MORE

One Package Insurance Policy for Your Home & Auto

Simplify and save with one policy, one payment.

- Average annual savings of \$806*
- AAA Members save up to an additional 7%**
- Accident forgiveness with no premium surcharge†
- Discount when switching both home and auto insurance from the same prior insurer

Enjoy the comfort of knowing you're covered by a company that will be there when you need protection the most.
Talk with a AAA Insurance Agent today.

AAA Tallahassee
3491 Thomasville Road
Tallahassee, FL 32309
850-907-1000

* New policyholders obtaining insurance through AAA saved an average of \$806 annually. Average annual savings were based on February 2016 survey results provided by new policyholders reporting the dollar differences between prior carrier and insurance through AAA. Insurance underwritten by Auto Club Insurance Company of Florida. Availability is subject to meeting underwriting criteria. **Discounts apply to select coverages only. AAA Member discount based on number of years as a member of AAA. †Accident Forgiveness program covers first at-fault accident after holding Package Policy for Home & Auto for two years. 19AC-0403 LC 9/16

Briefs

Hospice

November is National Hospice Month

Each of us has unique physical, emotional and spiritual needs. That is never more evident than when confronted with a serious illness. For 35 years, Big Bend Hospice (BBH) has based our care on respecting the patient's desires and empowering the caregiver/family.

November is National Hospice Month. BBH welcomes this opportunity to let our neighbors know that there is an option when there is no cure. Patients have the right to manage their pain and to live their last days to the fullest extent possible. BBH's team approach helps to improve the quality of life for patients with illnesses including cancer, cardiovascular disease, end-stage renal or liver disease, dementia, Alzheimer's and any other disease that, if left to run the natural course, would result death in six months or less.

How do you get Hospice care? Anyone – the patient, the family, physician or friend can initiate the conversation by calling Big Bend Hospice at (805)878-5310. Who pays for Hospice care? All services related to the illness, including prescriptions, are covered through Medicare, Medicaid, or Private Insurance. Thanks to the support from the community through the Big Bend Hospice Foundation, no one is ever turned away from BBH care due to inability to pay.

What is hospice care? It is supportive, compassionate and respectful care for the patient and their caregiver. Hospice is provided wherever the patient calls home, including hospitals, nursing home, and assisted living facilities. Every patient can keep



their own physician, but is offered a team of nurses, social workers, aids, spiritual counselors and trained volunteers. If the patient desires, Big Bend Hospice also offers unique services including music therapy, grief and loss counseling, a Veteran Liaison, and animal therapy to complete the team.

If you would like to learn more about Big Bend Hospice, contact Kimberly at 850-879-9300 or Kimberlyce@bigbendhospice.org

Big Bend Hospice has been serving this community since 1983 with compassionate end-of-life care along with grief and loss counselors available to provide information and support to anyone in Leon, Jefferson, Taylor, Madison, Gadsden, Liberty, Franklin or Wakulla County. If you would like additional information about services, please call 850-878-5310 or visit www.bigbendhospice.org. 🍀



PRESS RELEASE,
FROM: Sharon Davidson, Director of
Volunteer and Community Services.
Sharon@bigbendhospice.org 850.878.5310
DATE: September 27, 2018

GREATFLORIDA
INSURANCE
25 Years in Tallahassee

Easy. Affordable. Secure.

We help you find the best protection,
at the best price.

850-523-0717

joea@greatflorida.com | tallahassee.greatflorida.com

INDEPENDENTLY FAMILY OWNED AND OPERATED

QUALITY LIVING ALERT
PERSONAL MEDICAL ALERT SYSTEMS & EMERGENCY RESPONSE SERVICE

FREE
30 DAY TRIAL

10% DISCOUNT
FOR VETERANS

It's all about you!

- **FREE** Intruder Protection
- **FREE** Equipment
- **NO** Contracts
- **FIXED** Price
- **Waterproof**

Get help anytime, anywhere:
Works throughout USA
As low as \$31.99 a month
(12 paid months)

Get help anytime, anywhere:
Works throughout USA
As low as \$21.99 a month
(12 paid months)

Call us for more info
850-294-8500

"This gemant saved my life!"

BBB

Second Harvest of the Big Bend & KHA Food Drive



The Second Harvest distributes millions of pounds of food every year to hungry families in the 11-county region of the Big Bend. The food they

distribute includes donated products from national manufacturers, local wholesalers and retailers, other food banks, and local food drives. They also distribute USDA commodities through The Emergency Food Assistance Program (TEFAP), and food that is purchase with donated funds.

In 2018 Second Harvest will deliver enough nutritious food for over 7.4 million free meals, an increase of 51% (+2.27 million meals) from 2015. They do this in partnership with over 130 non-profit and faith-based organizations who serve individuals, families, children and other low-income persons with special needs. The food is delivered and distributed to these partner agencies, which in turn provide food pantries, feeding sites and other programs for those in need.

Despite the great strides made by Second Harvest in partnership with the community, the problem of

hunger continues to grow. The unmet "meal gap" in our area is about 25 million meals annually. In Leon County, for example, over 11 million meals are missing from dinner tables each year! While hunger rates have declined nationally and in Florida, to 13.4% and 15.2% respectively, the food insecurity rate in the Big Bend has grown worse. Unfortunately, the Big Bend region includes the Top 3 most food insecure counties in Florida: Madison County is first, followed by Gadsden (#2) and Leon (#3).

One in five people in the Big Bend experience hunger on a regular basis. Every month Second Harvest provides meals to feed more than 50,000 people, but the number of people in need is more than twice that amount.

That's why your involvement is so important. Ten pounds of donated food provides approximately 8 meals for a family. Please bring your donations to the KHA office located on Killarney Way where we have placed donation containers and are accepting donations through November 30, 2018. Please help us end hunger in our area! 🍀



PRIVATE
WEALTH MANAGEMENT
& CONSULTING, LLC

Does your retirement plan or investment account need a second opinion or "checkup"?


Contact your neighbor for a free initial consultation and review.



Mark W. Friedman, CPA/PFS
mfriedman@pwmllc.com
(850) 692-2500


Securities offered through Securities America Inc., member FINRA/SIPC. Advisory services offered through Securities America Advisors, Inc. Private Wealth Management & Consulting, Fisher & Friedman, PA and Securities America are separate entities. Securities America and its representatives do not provide tax or legal advice; therefore it is important to coordinate with your tax or legal advisor regarding your specific situation. Tax-related services are offered through Fisher & Friedman, PA.

Offices in Tallahassee, Destin and Eastpoint.



**CHOOSE A
PROVEN
REALTOR**

SUSAN ICE
Susan@HillSpooner.com



850.545.7015

Briefs

Why Roundabouts

Courtesy of FDOT

What is a Roundabout?

A Roundabout is a one-way circular intersection without traffic signal equipment in which traffic flows around a center island that operates with yield control at the entry points, and gives priority to vehicles within the Roundabout.



- 1 Central Island
- 2 Concrete Truck Apron
- 3 Pedestrian Refuge
- 4 Crosswalk
- 5 Yield Line
- 6 Splitter Island
- 7 Circulatory Roadway
- 8 Sidewalk Around Perimeter
- 9 Exit Lanes and Entry Lanes

Roundabout Signs

 SPEED LIMIT 15 Slow down when approaching a roundabout	 Watch for pedestrians	 Yield to traffic already in the roundabout
 Stay to the right of the splitter island	 Travel in a counterclockwise direction only.	

Roundabout User Tips



Cars

- Determine where you want to go.
- Approach the roundabout as you would a typical four-way intersection.
- Stay to the right of the splitter island and **SLOW DOWN** to 10-15 mph.
- If you are making a right turn, you should be in the right lane; if you are making a left turn, you should be in the left lane; through movements can be made from either lane.
- Watch for bicyclists and allow for them to merge into the entry lane.
- Watch for and yield to pedestrians in the crosswalk or waiting to cross.
- **YIELD** to traffic already in the roundabout.
- **DO NOT TURN LEFT AT THE SPLITTER ISLAND.**
- Once you are in the roundabout, do not stop except to avoid a collision; you have the right-of-way over entering traffic. Travel in a counterclockwise direction. **DO NOT CHANGE LANES.**
- Look for your street, use your right-turn signal and exit the roundabout.
- As you exit the roundabout, watch for and yield to pedestrians and bicyclists.
- If you miss your street, simply travel around the roundabout again and exit at the desired street.



Pedestrians

- Stay on the designated walkways at all times, crossing only at designated crosswalks.
- Never cross to the central island.
- Watch for cars; you have the right-of-way, but your best protection is your own attention.
- Cross the crosswalk one lane at a time, using the splitter island as a refuge area before crossing the next lane.



Bicyclists

- If comfortable riding in traffic, you may ride on the circulatory roadway of the roundabout like a car.
- As you approach the roundabout, merge into the entry lane before the shoulder or bike lane ends.
- Communicate your intentions to drivers by pointing to your destination.
- If uncomfortable riding in traffic, dismount your bicycle at the crosswalk and move to the sidewalk. Once on the sidewalk, walk your bicycle like a pedestrian.

Why Roundabouts?

Roundabouts move traffic safely and efficiently through an intersection. The benefits of a roundabout include slower speeds, reduction in pollution and fuel use, reduction in the severity of accidents, and drivers have more time to judge and react to other vehicles and pedestrians.

PRODUCED BY



Kimley-Horn
and Associates, Inc.

FOR FDOT

Driving Roundabouts

First, determine where you want to go.



Going Right



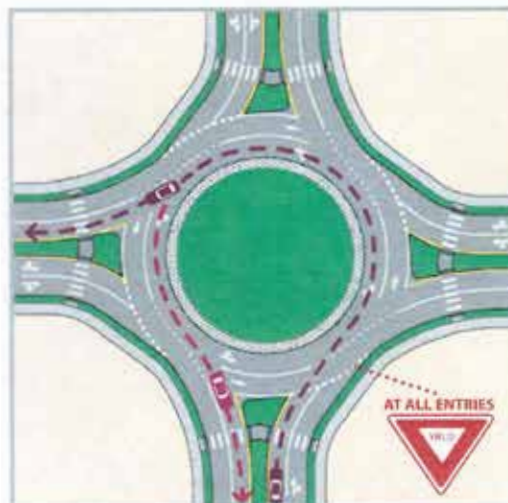
1. On approach you must be in the right lane unless otherwise marked on the road, and indicate a right turn.
2. Slow down and prepare to YIELD as you approach the roundabout.
3. YIELD to pedestrians and bicyclists crossing at the designated crosswalks.
4. You must YIELD to traffic already in the roundabout.
5. Enter the roundabout when there is a safe gap in the traffic.
6. Stay in the right lane.
7. Look for your street, use your right-turn signal, and exit the roundabout.
8. As you exit the roundabout, YIELD for any pedestrians or bicyclists crossing at the designated crosswalks.



Going Straight Ahead



1. When going straight ahead you do not need to indicate on approach.
2. Slow down and prepare to YIELD as you approach the roundabout.
3. On approach you can be in either lane, unless otherwise marked on roadway or posted.
4. YIELD to pedestrians and bicyclists crossing at the designated crosswalks.
5. You must YIELD to traffic already in the roundabout.
6. Enter the roundabout when there is a safe gap in the traffic.
7. Stay to the inside of the circulatory roadway if you entered from the left approach lane, or stay to the outside if you entered from the right approach lane. (DO NOT CHANGE LANES)
8. As you exit the roundabout, look out for vehicles traveling on the outside of the circulatory roadway that may continue to circulate around the roundabout.
9. As you exit the roundabout, YIELD for any pedestrians or bicyclists crossing at the designated crosswalks.



Going Left or Making a U-Turn



1. On approach you must be in the left lane unless otherwise marked on the road, and indicate a left turn.
2. Slow down and prepare to YIELD as you approach the roundabout.
3. YIELD to pedestrians and bicyclists crossing at the designated crosswalks.
4. You must YIELD to traffic already in the roundabout.
5. Enter the roundabout when there is a safe gap in the traffic.
6. Stay in the left lane (inside of the circulatory roadway) until you are ready to exit. (DO NOT CHANGE LANES)
7. Look for your street, use your right-turn signal, and exit the roundabout.
8. As you exit the roundabout, YIELD for any pedestrians or bicyclists crossing at the designated crosswalks.



THANKSGIVING RECIPES

Decadent Pumpkin Muffins

By Debbie Patterson

Yields 12 large muffins

Ingredients

For the muffins

- 1 1/2 cups all-purpose flour
- 3/4 cup brown sugar
- 1/4 cup granulated sugar (optional for a sweeter muffin)
- 1 teaspoon baking soda
- 1/2 teaspoon baking powder
- 1 teaspoon salt
- 2 teaspoons cinnamon
- 1/2 teaspoon nutmeg
- 1/2 teaspoon cloves
- 1/2 teaspoon ginger
- 1 teaspoon vanilla
- 2 eggs
- 1 can pumpkin
- 1/2 cup oil

Cream cheese Icing (optional)

- 6 oz cream cheese, at room temperature
- 1/3 cup confectioner's (powdered) sugar
- 1/2 teaspoon vanilla

Cream cheese Filling (optional)

- 6 oz cream cheese, at room temperature
- 1/3 cup confectioner's (powdered) sugar
- 1/2 teaspoon vanilla
- 1 egg yoke

For the pecan streusel topping

- 1/2 cup flour
- 4 tablespoons unsalted butter, melted
- 1/3 cup finely chopped pecans
- granulated sugar



Instructions:

1. Preheat oven to 350°F. In a small bowl, stir together all ingredients for the cream cheese filling, and set aside. In another small bowl, stir together all ingredients for the streusel topping, adding in pecans last. The batter should be slightly wet, but dry enough to form into small crumbles. If your consistency is off, add in one additional tablespoon of flour. Set aside.
2. In a large bowl, mix together flour, sugar, baking soda & powder, salt, nutmeg, cinnamon, ginger, and cloves until combined.
3. Make a well in the center of your dry ingredients. Pour in eggs, oil, milk, vanilla, and pumpkin puree. Whisk together the wet ingredients for about 30 seconds, then fold them into the dry ingredients until just combined.
4. Line a muffin tin with 12 large muffin cups. Carefully spoon 2 tablespoons of pumpkin batter into each muffin cup. With a second spoon, drop 1 tablespoon of cream cheese filling into the muffin cups. Top with another tablespoon of pumpkin batter. This should perfectly evenly distribute both mixtures so you have little to none left.
5. Last, top each muffin with 1 to 1 1/2 tablespoons of streusel by picking it up in your hands and crumbling the dough on top of each muffin. Once again, you should be left with little to no streusel once you top each muffin. Press down slightly on each muffin to set the streusel into the pumpkin batter.
6. Bake for 30 minutes, or until a knife inserted in the center of the muffin comes out clean (there may be slight cream cheese residue.)

Thanksgiving Apple-Challah Stuffing

By Danie Turner

Ingredients:

- | | |
|---|--|
| 2 one-pound loaves of challah bread, cubed and dried* | 1 TBSP dry herbs such as Herbs de Provence |
| 2 sticks of unsalted butter | 2 TBSP fresh rosemary leaves, minced |
| 2 cups of onion, diced | 2 cups of Granny Smith apples, peeled and diced |
| 2 cups of celery, diced | 2 cups turkey stock or chicken stock, low sodium |
| 3 tsp of Kosher salt | |
| Fresh ground pepper, to taste | |

Instructions:

1. *Cut bread into 1-inch cubes and place on a baking tray, uncovered, to make them stale, approximately 6-8 hours, or you can quickly dry the bread in a 250-degree oven for about 30 minutes. You can always dry the bread cubes the day before and then store in a plastic bag until ready to use.
2. Preheat oven to 350 degrees.
3. In a large pan over medium heat, melt butter. Add the onions, celery, salt and pepper and cook until onions are translucent or soft, approximately 8 minutes. Add herbs, rosemary, diced apples and cook 5 minutes more or until apples are soft.
4. In a very large mixing bowl, combine bread cubes, cooked vegetables and apples, and the turkey/chicken stock. Mix well. Try not to mush the bread, but make sure all the liquid is absorbed and all is evenly mixed. Press stuffing into a lightly greased 9x13 baking dish and cover with foil. Bake for 40 minutes at 350 degrees. Remove from oven and raise the temperature to 450 degrees. Remove the foil, and bake an additional 10-15 minutes or until light or golden brown. Cool about 10 minutes, then serve. Serves approximately 10.



Awesome Leftovers Turkey Stuffed Peppers

By Gloria Arias

Yield: 4

Prep: 10 minutes

Total: 40 mins

Ingredients:

- | | |
|--------------------------------|---|
| 1 large egg, beaten | 4 red and yellow bell peppers, hollowed out |
| 2 c. leftover turkey, shredded | 1 1/2 c. shredded mozzarella |
| 2 c. leftover stuffing | Fresh parsley, for garnish |
| kosher salt | |
| Freshly ground black pepper | |

Instructions:

1. Preheat oven to 350 degrees F. In large bowl, combine beaten egg, turkey, and stuffing. Season with salt and pepper and mix together.
2. Spoon mixture into bell peppers and top with mozzarella.
3. Transfer peppers to baking dish and bake until peppers are tender, and cheese is melty, 25 to 30 minutes. Garnish with parsley.

Kay's Famous Chili

By Phil Inglese

For cold weather comfort or any time requires no seasoning simple recipe that can be ready in an hour. Easily serves 8.

Ingredients:

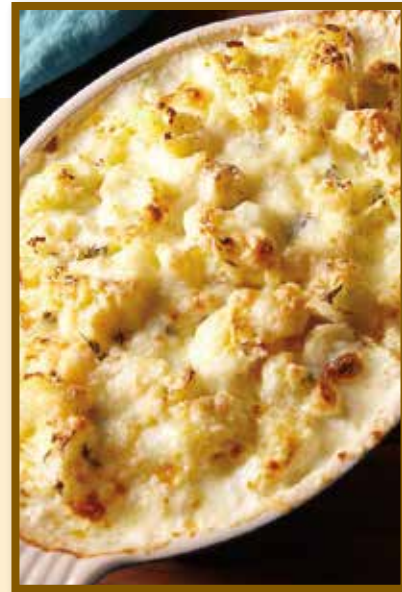
1.5 pounds ground beef (85-15)	2 table spoons vegetable oil
1 large sweet onion chopped	3 cans Joan of Arc spicy chili beans
16 ounces sour cream	2 cans Rotel mild tomatoes
8 ounces fine shredded sharp cheddar	1 can tomato sauce

Instructions:

1. Brown ground beef and chopped onion in vegetable oil in a Dutch oven.
2. Once browned add undrained chili beans, drained Rotel tomatoes, and tomato sauce.
3. Simmer for 30 minutes covered stirring occasionally.

Serve to taste with sprinkling of cheddar cheese and dollop of sour cream.

For those who prefer more heat Rotel has two versions that are progressively hotter.



Cheesy Cauliflower Bake

By Denny Alexander

Here is your gift from me – the gift that keeps on giving all year long, on so many levels. When we gather from all corners of the country, or globe, the last thing we want to do is spend unnecessary hours of prep time in the kitchen when a mimosa and conversation is so much more rewarding. Oh, and as Paula Dean would say, look at all that butter.

Ingredients:

1 ½ - large heads cauliflower	1 c. - freshly grated Parmesan
6 tbsp. - butter, plus more for buttering the casserole dish	1 tbsp. - fresh thyme leaves
1/2 c. - heavy cream	kosher salt
3 - cloves garlic, minced	Freshly ground black pepper
2 c. - grated white cheddar	

Instructions:

1. Preheat oven to 400°. In a large pot of salted boiling water, cook cauliflower until tender, 8 minutes. Drain well.
2. Butter a large baking dish. Add half the cauliflower and pour over half the heavy cream. Dot with half the butter, sprinkle with half the garlic, cheddar, Parmesan, and thyme. Repeat with remaining ingredients and season with salt and pepper.
3. Bake until cheese is melty and deeply golden, 30 minutes.
4. Let cool 5 minutes, then serve.

Potatoes Gourmet

By Danie Turner

Ingredients:

6 medium potatoes	2 TBSP fresh chopped chives or 3 green onions chopped
¼ cup melted butter or margarine	1 tsp salt
2 cups shredded cheddar cheese	¼ tsp pepper
1 8 ounce carton of sour cream	2 TBSP butter or margarine

Instructions:

1. Cover potatoes with salted water and boil, reduce heat and cook 30 minutes. Cool slightly. Peel coarsely.
2. Combine ¼ cup melted butter and cheese in a saucepan. Cook low heat, stirring constantly. When cheese is partially melted, combine potatoes, chives, sour cream, onions, salt, and pepper – stir well.
3. Put in greased 2 quart shallow casserole. Dot with 2 TBSP butter. Cover. Bake 300 degrees for 25 minutes.



Oven-baked Cranberry Sauce

By Danie Turner

Ingredients:

3 cups fresh, whole, cranberries	1 or 2 TBLS Grand Marnier Liqueur
1-½ cups granulated sugar	

Instructions:

1. Preheat oven to 350 degrees.
2. Combine sugar and cranberries in a 9x9 glass baking dish. Bake for 15 minutes. Stir. Continue baking in 15-minute increments until all the sugar is dissolved, stirring at each increment. Total cooking time is approximately 30-40 minutes. The sauce will be thick and syrupy. Remove from oven.
3. Stir in as much of the Grand Marnier Liqueur as you desire. Allow to cool. Cover and keep chilled until ready to serve.

Tip: You can make this recipe one or two days ahead. You can even spoon the sauce into your favorite holiday serving dishes. Just keep them covered and cool in the refrigerator. Serves at least 10.

Avoid These Turkey Mistakes

- ☘ Don't forget that a frozen turkey takes FOUR DAYS to thaw in the refrigerator.
- ☘ Don't brine your turkey if the label says "contains up to 8% of a solution of water, salt, spices and natural flavor."
- ☘ Make sure your turkey rests at room temperature before you roast it.
- ☘ Dry the turkey really well on the outside and inside the cavity for crispy skin
- ☘ If you don't brine your turkey, make sure you season it well after drying...and don't forget the cavity.
- ☘ Use a roasting rack inside your roasting pan to avoid an overcooked underside.
- ☘ Don't cook stuffing inside the bird.
- ☘ Roast your turkey at 475° for first 30 minutes, then 350° the remainder of the cooking time.
- ☘ Protect your bird from browning too much with aluminum foil.
- ☘ Don't baste, the drippings aren't 100% fat and that will actually make the skin soggy and meat dry.
- ☘ Don't rely on the pop-up thermometer, instead roast the bird until the internal temp reaches 165°.
- ☘ Let the bird rest for at least 15 minutes before carving and only carve what you serve.

DECEMBER IN THE GARDEN

By Lilly Anderson-Messec of Native Nurseries of Tallahassee

Native Nurseries

The Store for Nature Lovers

1661 Centerville Road, Tallahassee, FL 32308
850-386-8882 www.nativenurseries.com
Monday-Saturday, 8am-6pm

COLOR FOR WINTER

Even through the winter months, a Tallahassee yard can flourish with color. Trees and shrubs with ripening berries like native Yaupon Holly and Wax Myrtle provide colorful interest, food for birds, and can be used to make unique centerpieces and arrangements for the holidays. Winter blooming Camellias, along with the ripening fruits of citrus trees like Satsuma Tangerines, Kumquats and Meyer Lemon are bright spots in the winter garden. This is also the best time for planting trees and shrubs in Tallahassee.

In the vegetable garden, Kales in an array of blues and greens are complimented by the neon stalks of tasty Swiss Chard. Both of these greens are both ornamental & tasty.

You might also consider adding edible flowers to your plate too! Cold-tolerant annuals such as Violas, Pansies, Nasturtiums & Dianthus all have edible blooms that can add impressive color to your dishes.



Winter in Florida has arrived, the leaves have fallen and wildflowers are retreating to rest up for spring. But there's still plenty to enjoy outdoors – the cool weather, crisp winter sun, colorful migrating birds, winter fruits and berries and no mosquitoes!



BIRDS ABOUND IN WINTER

Though there are less colorful flowers in your yard, you can find plenty of color in the variety of birds appearing in your winter garden. The Panhandle is the last last stop on the flyway for birds migrating south for winter in the Eastern US. Before they head across the Gulf to Central and South America for the winter, they stop here to stock up on calories for their trip and some overwinter here in Florida. This is always the best time for birdwatching, so keep your feeders full of fresh seed and your eyes peeled for Goldfinch, Pine Siskins, Rose-breasted Grosbeak and Chipping Sparrows. While these migrants can be seen at seed feeders, many other migrating birds aren't attracted to seed. Migrating Warblers, Summer Tanagers and Scarlet Tanagers, as well as residents such as Bluebirds, Woodpeckers and Nuthatches are all attracted to the fresh suet cakes we make right here at Native Nurseries.

Tallahassee realtors have been busy in Killearn Estates ...

WHEN YOU ARE READY TO BUY OR SELL A HOME, CHOOSE THE REALTOR WHO LOVES WHERE SHE LIVES AND LIVES WHERE SHE WORKS!

11 RESIDENTIAL SALES 39 AVERAGE DAYS ON MARKET \$127.03 AVERAGE PRICE PER SQFT \$278,945 AVERAGE SALES PRICE

OCTOBER	Closing Date	Address	SQF	BDR	BTHS	SP	DOM
	10/1/18	3006 Bay Shore	1302	2	2	\$156,000	36
	10/5/18	2970 Bayshore Drive	1406	3	2	\$180,000	33
	10/9/18	2974 Giverny Circle	1821	3	2	\$255,000	53
	10/15/18	4632 Killimore Lane	2527	3	2	\$240,000	19
	10/18/18	4016 Kilmartin Drive	3458	4	3	\$474,900	8
	10/19/18	2397 Ryan Place	1280	2	3	\$123,500	40
	10/19/18	5048 Tallow Point Road	2377	3	4	\$365,000	61
	10/24/18	3048 Tipperary Drive	1770	3	2	\$271,000	2
	10/26/18	3510 Offaly Court	3300	4	3	\$363,000	21
10/29/18	3948 Leane Drive	2669	5	4	\$335,000	70	
10/30/18	2914 Giverny Circle	2203	3	3	\$305,000	91	

Information courtesy of ...



Keller Williams Town & Country Realty
1520 Killearn Center Blvd.
Tallahassee, FL 32309



Corinne Johnston
Realtor©

(850) 294-7058

CorinneJohnston@KW.com
Tallahassee-Realtor.com



Professional Building & Remodeling

TALLAHASSEE CONSTRUCTION

#CRC057459 • #CCC1325561 4028 DeSoto Farm Rd. TALLAHASSEE, FL 32309
CELL: 850.545.9777
OFFICE: 850.668.4400
FAX: 850.668.5900
STEPHENHODGES@EARTHLINK.NET

NEW HOMES • ROOM ADDITIONS
CABINETS • SCREENED PORCHES
WOOD DECKS • FIREPLACES
REROOFING • BATHROOMS • KITCHENS

Jim Maples Carpentry, Inc.
HANDYMAN SERVICES THAT WORK FOR YOU

Woodrot Repair • Painting • Light Moving
Pressurewashing • Light Tree Removal • Debris Hauling
Plus Other Home Improvements

(850) 545-8418

Registered and Insured

Bringing You the **BEST** in ...

Southern Comfort
for over 35 years.

BENSON'S
HEATING & AIR CONDITIONING INC.
Better Because It's Benson's

2017 **BEST** of TALLAHASSEE

for Over 10 Years

FL: CMC056269 | GA: CN208982 **BensonsHVAC.com • 850-562-3132** Financing Available

Killearn Homes Association, Inc. Profit & Loss Budget vs. Actual January through October 2018

	Jan - Oct 18	Budget
Ordinary Income/Expense		
Income		
6010 · INCOME-CURRENT DUES	551,995.00	552,000.00
6013 · INCOME-LATE FEES	8,975.00	7,000.00
6017 · ESTOPPEL	47,300.00	36,000.00
6018 · FINES	2,400.00	
6020 · DELINQ ACCT-Maint Chargebacks	1,255.00	100.00
6022 · COLL. FEES-LEGAL	28,700.00	12,000.00
6024 · ADMIN. NOTICING COST	967.00	600.00
6030 · INCOME-OTHER	100.00	2,600.00
6033 · INCOME-ADVERTISING	23,696.15	40,000.00
6055 · CENTURYLINK COMMISSION	0.00	36,000.00
6057 · KILLEARN ESTATES SWIM CLUB	39,110.00	26,800.00
6830 · INCOME-INTEREST	1,420.30	500.00
7000 · TRANSFER FROM CIP RESERVE	0.00	91,000.00
Total Income	705,918.45	804,600.00
Gross Profit	705,918.45	804,600.00
Expense		
6052 · LICENSES & FEES	345.51	300.00
6560 · PAYROLL TAXES	12,530.35	16,100.00
6950 · SWIM CLUB CONTRACT	4,500.00	5,400.00
7050 · LAKES	29,420.00	40,000.00
7060 · LANDSCAPE IMPROVEMENTS/MAINT	7,343.40	3,000.00
7100 · GROUNDS MAINTENANCE CONTRACT	55,689.60	85,000.00
7110 · ADDITIONAL GROUNDS SERV.	30,048.89	31,500.00
7115 · TREE SUCCESSION	0.00	6,000.00
7120 · REPAIRS/MISC MAINTENANCE	1,355.55	4,800.00
7125 · POOL IMPROVEMENTS	3,879.45	
7130 · SIGNAGE	10,857.55	2,000.00
7251 · COVENANT REVITAL/ PRESERVATION	0.00	1,000.00
7270 · UTILITIES-COMMON AREAS	6,451.50	7,000.00
7271 · ASSN. CENTER - UTILITIES	3,590.25	3,000.00
7272 · CLEANING SERVICE	1,868.75	4,000.00
7325 · KHA SWIM CLUB - SUPPLIES	3,626.74	3,000.00
7335 · KHA SWIM CLUB - UTILITIES	5,862.63	6,000.00
7400 · TENNIS COURT IMPROVEMENT/MAINT	1,081.05	38,000.00
7450 · BRIDLE TRAIL IMPROVEMENT/MAINT	2,190.00	18,500.00
7610 · PARK IMPROVEMENTS/MAINTENANCE	25,276.80	104,500.00
7620 · PARK LANDSCAPING	819.18	
8050 · NEWSLETTER	42,066.42	50,000.00
8110 · ANNUAL ASSOC. MEETING	217.98	500.00
8170 · OTHER	1,340.51	2,000.00
8295 · OFFICE IMPROVEMENTS	493.33	0.00
8410 · MEMBERS STATEMENT	331.56	1,500.00
8420 · LEGAL & PROF. FEES	18,392.90	50,000.00
8425 · LEGAL FEES COLLECTIONS	7,007.72	6,000.00
8580 · PAYROLL-SALARIES	152,825.25	184,000.00
8640 · ACCOUNTING/AUDITING	7,000.00	7,000.00
8645 · WEBSITE & SOCIAL MEDIA	160.00	4,000.00
8680 · AUTO EXPENSES-GENERAL	3,577.03	4,000.00
8710 · BANK CHARGES	13.00	
8730 · MISC. ADMIN. EXPENSE	11,412.89	12,000.00
8750 · EVENTS	906.23	16,500.00
8780 · INSURANCE - LIABILITY	11,249.00	11,000.00
8781 · INSURANCE - UMBRELLA POLICY	7,756.00	8,000.00
8782 · INSURANCE - WORKER'S COMP	3,278.00	3,000.00
8783 · INSURANCE-PROPERTY	3,377.87	4,000.00
8784 · INSURANCE-DIRECTORS & OFFICERS	5,650.00	5,500.00
8787 · INSURANCE-BUSINESS AUTO	501.00	500.00
8850 · POSTAGE	5,668.44	5,000.00
8860 · PRINTING	3,101.81	2,000.00
8870 · COPY MACHINE	2,203.80	3,000.00
8940 · SUPPLIES-OFFICE	1,692.49	3,000.00
9500 · TELEPHONE	3,314.24	4,000.00
9880 · FEDERAL INCOME TAX	4,933.00	14,000.00
9945 · BAD DEBT	23,528.00	25,000.00
Total Expense	528,735.67	804,600.00
Net Ordinary Income	177,182.78	0.00
Net Income	177,182.78	0.00

Architectural Control Committee Actions as of October 31, 2018

The Committee meets every Wednesday at 10am in the Killlearn Homes Association Board Room

DATE	UNIT	PROJECT	ACTIONS/CONDITIONS	DATE	UNIT	PROJECT	ACTIONS/CONDITIONS
10/3/2018	7	TREE REMOVAL	APPROVED	10/24/2018	8	TREE REMOVAL	APPROVED
	1	SHED	APPROVED		17	RE-ROOF GRAY SHINGLES	APPROVED
	6	DORMERS	NEED MORE INFO.		11	INSTALL SHED	DENIED ONLY ONE SHED
	18	TREE REMOVAL	APPROVED		51	INSTALL FENCE	PENDING
	18	REPLACE GARAGE DOOR	APPROVED		40	12X10 SUNROOM	APPROVED
	14	EXTERIOR PAINT	NEED MORE INFO.		7	REPLACE DEC W/SUNROOM	APPROVED
	7	EXTERIOR PAINT	APPROVED		51	MOVE SHED TO NEW HOUSE	CANNOT APPROVE DUE TO CONDITION
	3	REPLACE 6FT. WOOD FENCE	APPROVED				
	12	REPLACE CONCRETE DRIVE	APPROVED				
	2	PLAYHOUSE	NEED MORE INFO.				
	31	STAIN/REPAIR FENCE	APPROVED				
10/17/2018	37	PERGOLA	APPROVED	10/31/2018	22	6FT WOOD PRIVACY FENCE	APPROVED
	14	EXTERIOR PAINT	APPROVED		31	TREE REMOVAL	PENDING ADD'L. INFO.
	28	TREE REMOVAL	APPROVED		38	TREE REMOVAL	APPROVED
	2	PLAYHOUSE	APPROVED		41	TREE REMOVAL	APPROVED
	12	RE-ROOF/SHINGLES/DRIFTWOOD	APPROVED		42	NEW SHINGLES	APPROVED
	6	RE-ROOF/DORMERS/REAR	APPROVED		7	GARAGE DOOR/PAINT HOUSE	APPROVED
	35	RE-ROOF/GUTTERS	APPROVED		27	REPLACE POOL ENCLOSURE	APPROVED
	18	FENCE INSTALL	APPROVED		27	REPLACE BROWN SHINGLES	APPROVED

Violations Report as of October 31, 2018

UNIT VIOLATIONS	UNIT	VIOLATIONS
17 MIN HOUSING STDS. 2ND NOTICE	7	UNSIGHTLY GROWTH/LAWN MAINT
31 UNAUTHORIZED ALTERATIONS 2ND NOTICE	51	NONCOMPLIANT VEHICLE
10 UNAUTHORIZED ALTERATIONS 2ND NOTICE	19	NONCOMPLIANT VEHICLE
12 LAWN MAINT. 2ND NOTICE	17	MIN. HOUSING STANDARDS
3 NONCOMPLIANT VEHICLE 2ND NOTICE	10	YARD MAINTENANCE
51 LAWN MAINT. 2ND NOTICE		YARD MAINTENANCE
10 UNAUTHORIZED ALTERATIONS 2ND NOTICE	11	NONCOMPLIANT VEHICLE
10 NON COMPLIANT VEHICLE 2ND NOTICE	38	NONCOMPLIANT VEHICLE
41 UNSIGHTLY ACCUMULATION 2ND NOTICE	9	NONCOMPLIANT VEHICLE
26 MIN HOUSING STANDARDS 2ND NOTICE	7	MIN. HOUSING STANDARDS
40 UNAUTHORIZED ALTERATIONS 2ND NOTICE	16	MIN. HOUSING STANDARDS
37 UNAUTHORIZED ALTERATIONS	23	UNSIGHTLY GROWTH/LAWN MAINT
11 LAWN MAINTENANCE	10	YARD MAINTENANCE
39 NONCOMPLIANT VEHICLE	33	YARD MAINTENANCE
9 MIN. HOUSING STANDARDS	14	UNAUTHORIZED ALTERATIONS
7 UNSIGHTLY ACCUMULATION	14	SIGNAGE
7 UNSIGHTLY ACCUMULATION	14	NONCOMPLIANT VEHICLE
7 YARD MAINTENANCE	7	MIN. HOUSING STANDARDS

ACC Committee: John Paul Bailey, Sam Bell, Kelley Phillips

ALL EXTERIOR ADDITIONS OR ALTERATIONS, INCLUDING TREE REMOVAL, MUST BE APPROVED IN WRITING BY THE ACC PRIOR TO COMMENCEMENT OF WORK.

KLOVERLEAF

2705 Killarney Way, Tallahassee FL 32309

PRESORT STANDARD
U.S. POSTAGE
PAID
TALLAHASSEE, FL
PERMIT # 132



SPECIALS

Tuesday
Kids Eat Free

Wednesday
AYCE Spaghetti
\$9.99

Thursday
Baked Ziti
\$11.99

Friday
Seafood Lasagna
\$25.00

EVERY DAY IS A GOOD DAY TO EAT AT



MOM & DAD'S
Italian Restaurant
EST. 1963

3421 BANNERMAN RD. SUITE #104
TALLAHASSEE, FL 32312

850-877-4518 | WWW.MOMANDDADSTALLY.COM



As we celebrate our 18th year in business, we thank all of our customers for their continued support.



Thanks for voting us Tallahassee's Best Painter for six years.
2008, 2009, 2010, 2011, 2012 & 2013

Interior/Exterior • Pressure Washing • Carpentry
Wood Repair • Wallpaper Removal



SUPERIOR PAINTING
297-1882

Father-and-Son Owned
Licensed • Insured • Worker's Comp

