



IMPORTANT ALERT: More traffic for Killearn

The Welaunee Extension is a City/County/Blueprint project funded by our 1¢ sales tax to reduce congestion from Centerville, Miccosukee, Mahan and Thomasville Roads. It will create a new road merging into Killearn Estates at Shamrock Street South. Resulting traffic will be routed throughout Killearn Estates.

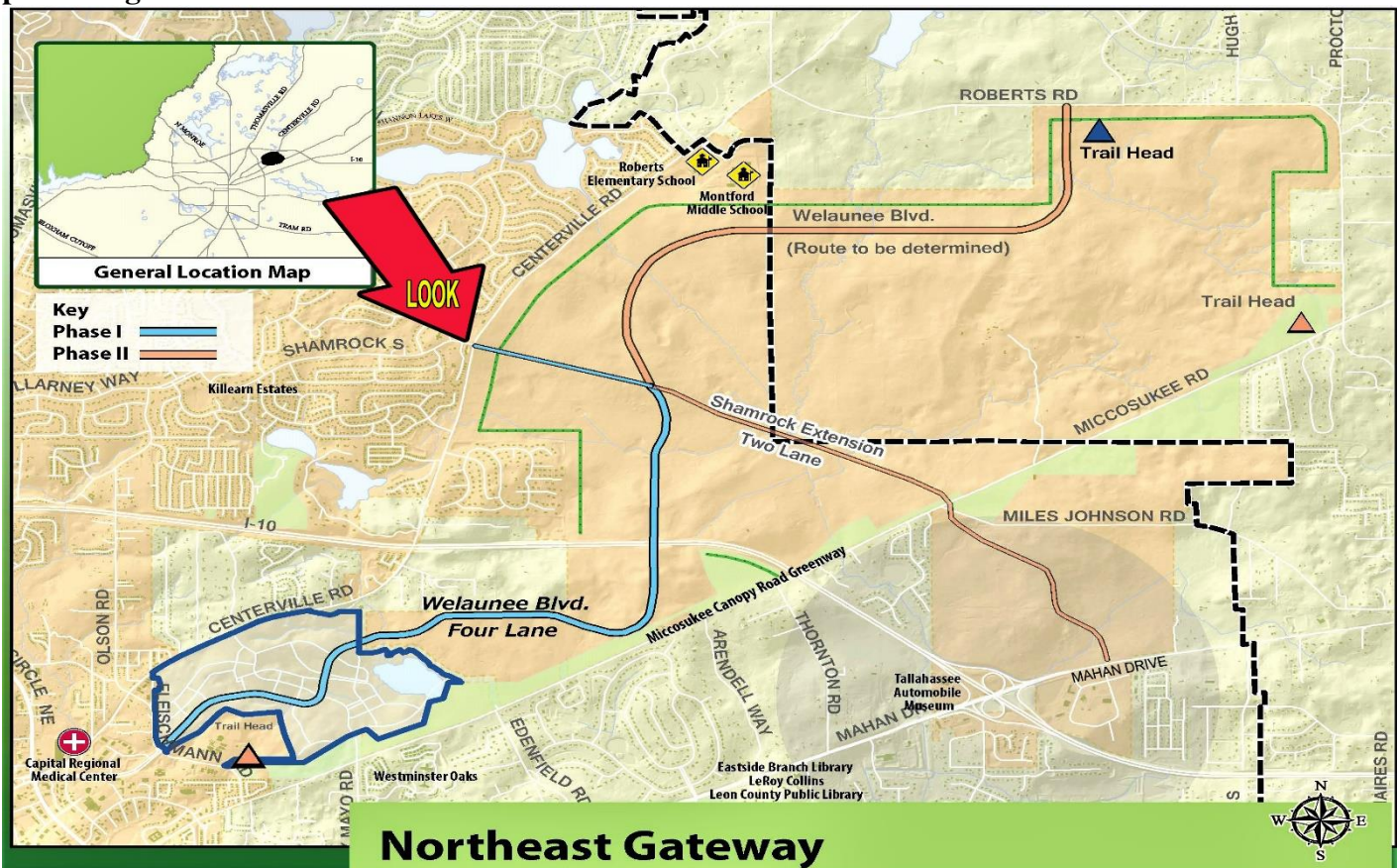
WHAT WILL IT DO TO KILLEARN ESTATES?

- Substantially increase traffic throughout Killearn
- Threaten the safety of our children, pedestrians, drivers, bikers
- Erode property values
- Forever change the residential character of Killearn

WHAT YOU CAN DO ABOUT IT?

- Oppose new traffic into Killearn Estates
- Demand alternative routing
- Write, email, call City and County Commissioners and Blueprint IA
- Attend Killearn Town Hall meetings
- Stay informed: www.killearn.org; <https://www.facebook.com/KillearnEstates/>
- Share information with your neighbors

This project will severely jeopardize the safety of our residents and negate longstanding legal precedents protecting Killearn from additional traffic.





TOWN HALL

Traffic Impact on Killlearn Estates

Tues. May 7th 6:30 pm

Killlearn United Methodist Church - Sanctuary
2800 Shamrock St. South (Killarney Way Roundabout)

KHA's May monthly board meeting will be dedicated to information about Phase I of the Welaunee Extension to Shamrock South.

- What is the traffic impact on Killlearn Estates?
- Will commercial traffic increase?
- How will the extension affect property values?
- Are there other options to relieve traffic in the NE?

City and County Commissioners have been invited.
Blueprint staff will be available to answer questions.
Other neighborhoods affected by the project have been invited.

Come to learn! Come to contribute!



Killlearn Homes Association 2705 Killarney Way Tallahassee, FL 32309 850.893.3468
www.killlearn.org/welaunee-extension-update