

Killearn Homes Association Meeting

Northeast Gateway: Phase I Project Development & Environment Study

Leon County, Florida

Tuesday, May 7, 2019

Tonight's Engagement

1 What We've Heard

2 Background

3 Community Growth

4 Discussion

Visit the project website at
NEGateway.com

We've Been Listening

Extensive Project History

Phase I vs. Phase II

Future Growth

Traffic and Safety Concerns

Future I-10 Interchange

Property Values



To date, more than **130** comments have been received and responded to for this project.



Good Planning —→ Good Projects



The County and City created the Blueprint Intergovernmental Agency to oversee the implementation of a specific project list.



Leon County Sales Tax Committee

**September
2011**

The Committee was established.



The Committee was comprised of **18**



**November
2014**

Referendum was placed on the ballot and passed with 65% support across the community.

25 meetings over the two-year period.

This Project: Northeast Gateway Phase 1

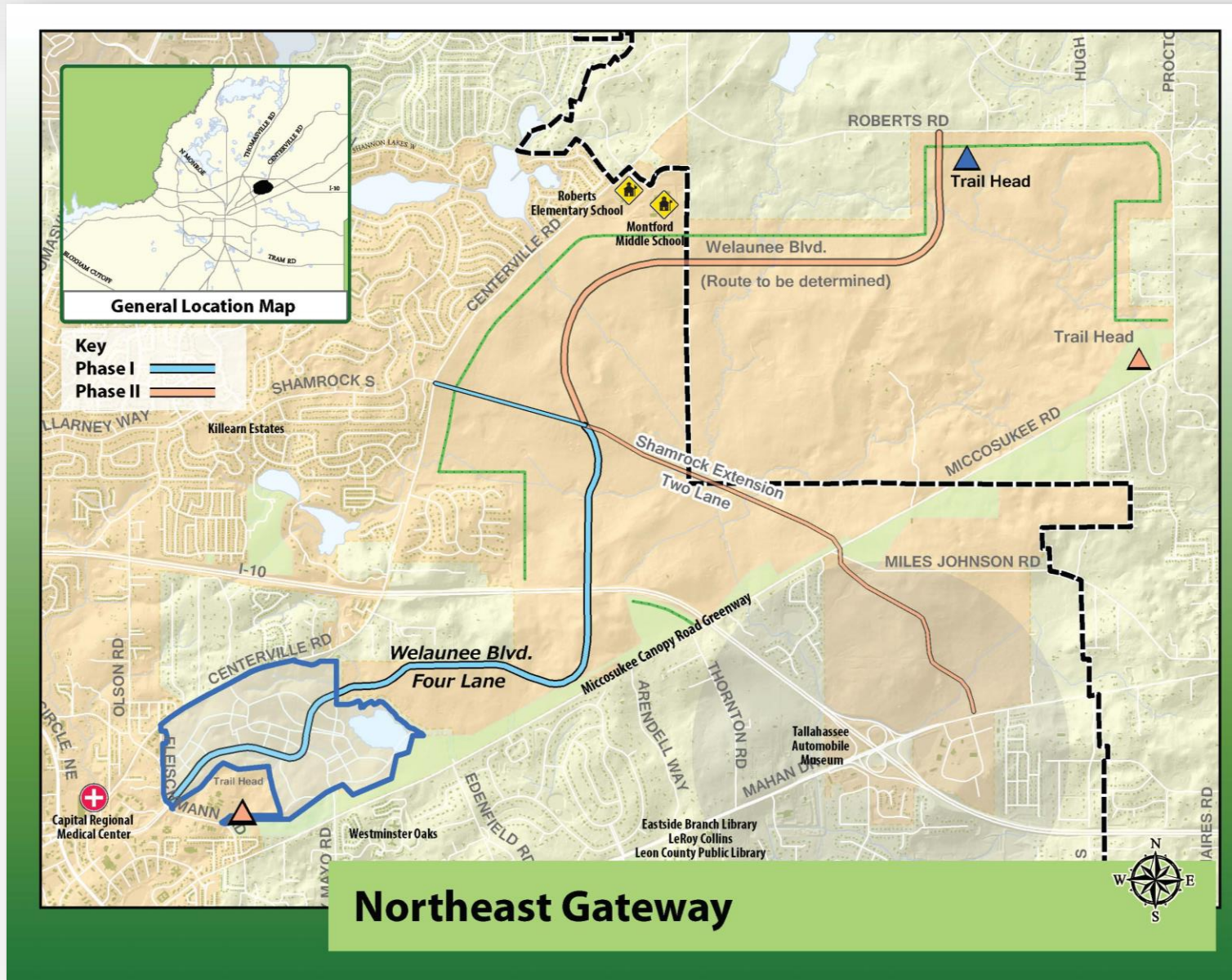
Phase I includes:

- Regional road
- Four-lane Welaunee Boulevard
- Two-lane Shamrock Extension
- Welaunee Greenway

Phase I is funded for
\$47.3 million.

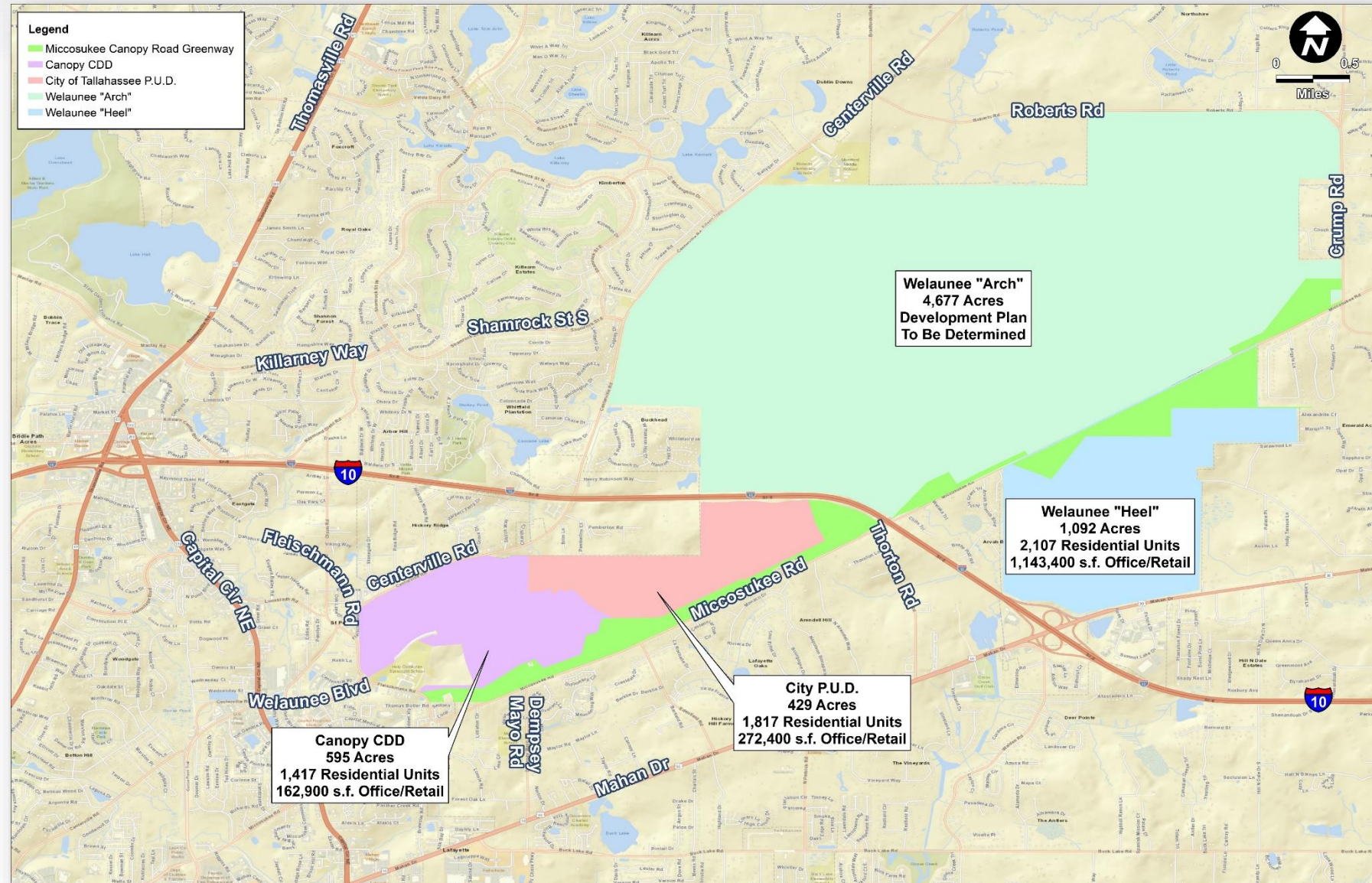
Phase II is unfunded.

For more information,
please visit
LeonPenny.org



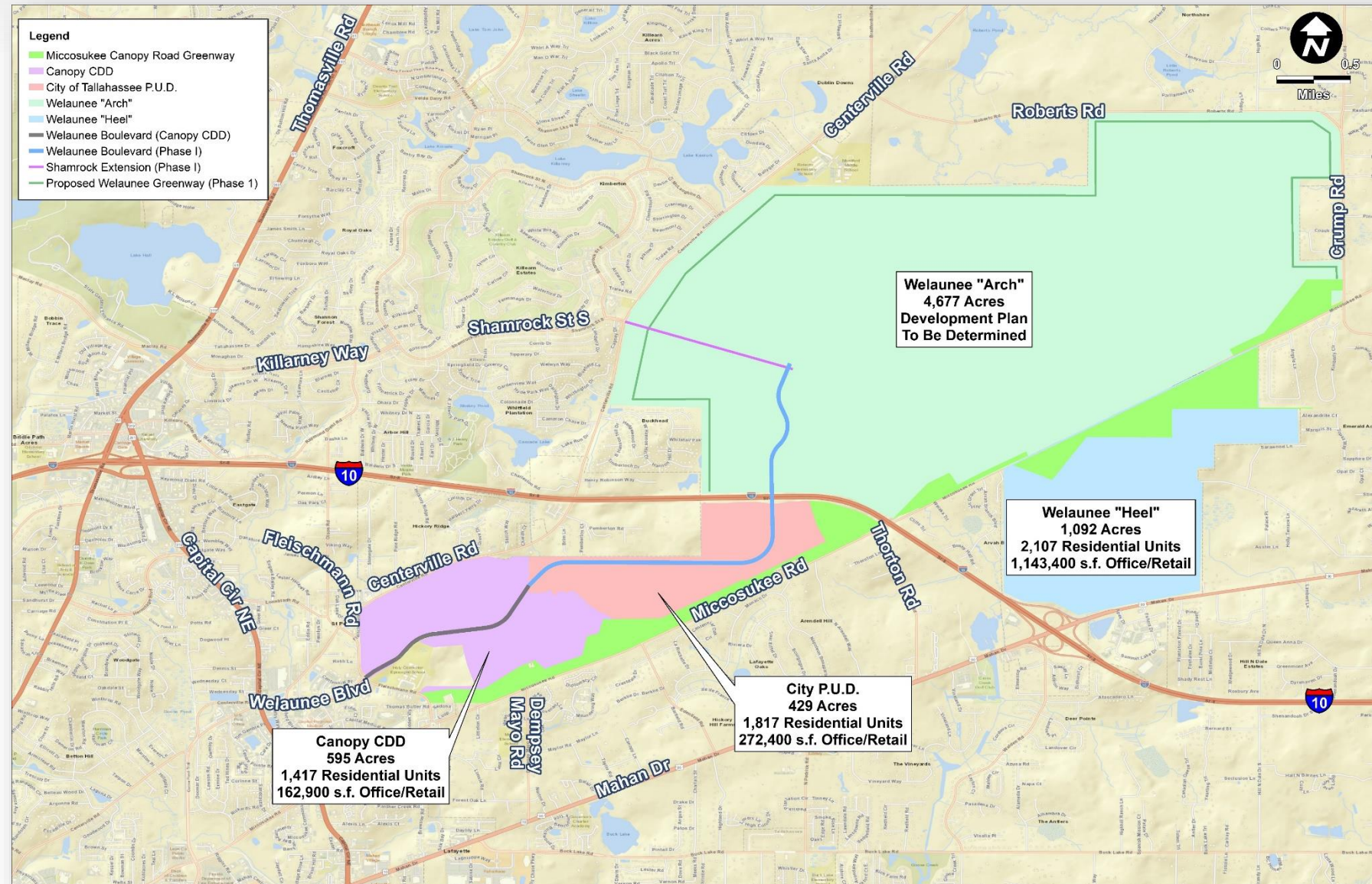
Our Community Continues to Grow!

- Identified as area for future community growth
- Within City limits
- Approved Planned Unit Developments
- Additional ongoing planning efforts



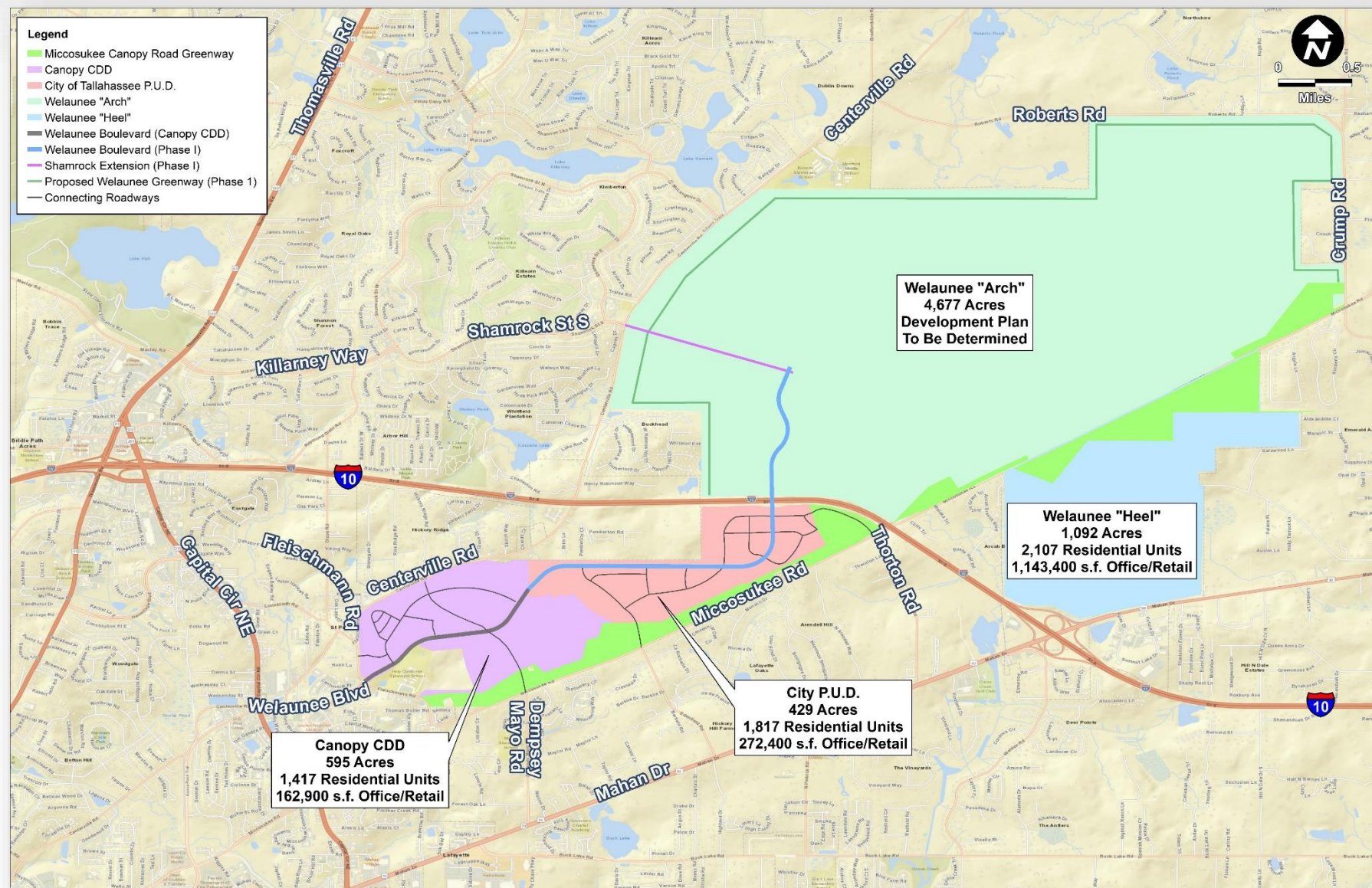
Northeast Gateway Phase 1

- This is the beginning point
- Benefits today and in the future
- Welaunee Boulevard (4 Lanes)
- Shamrock Street Extension (2 Lanes)
- Multimodal facilities



Additional Roadways and Connections

- Connecting Phase 1
- Additional connections to:
 - Centerville Road
 - Miccosukee Road
 - Fleischmann Road
- Traffic analyses will consider operations and safety of full network and connections

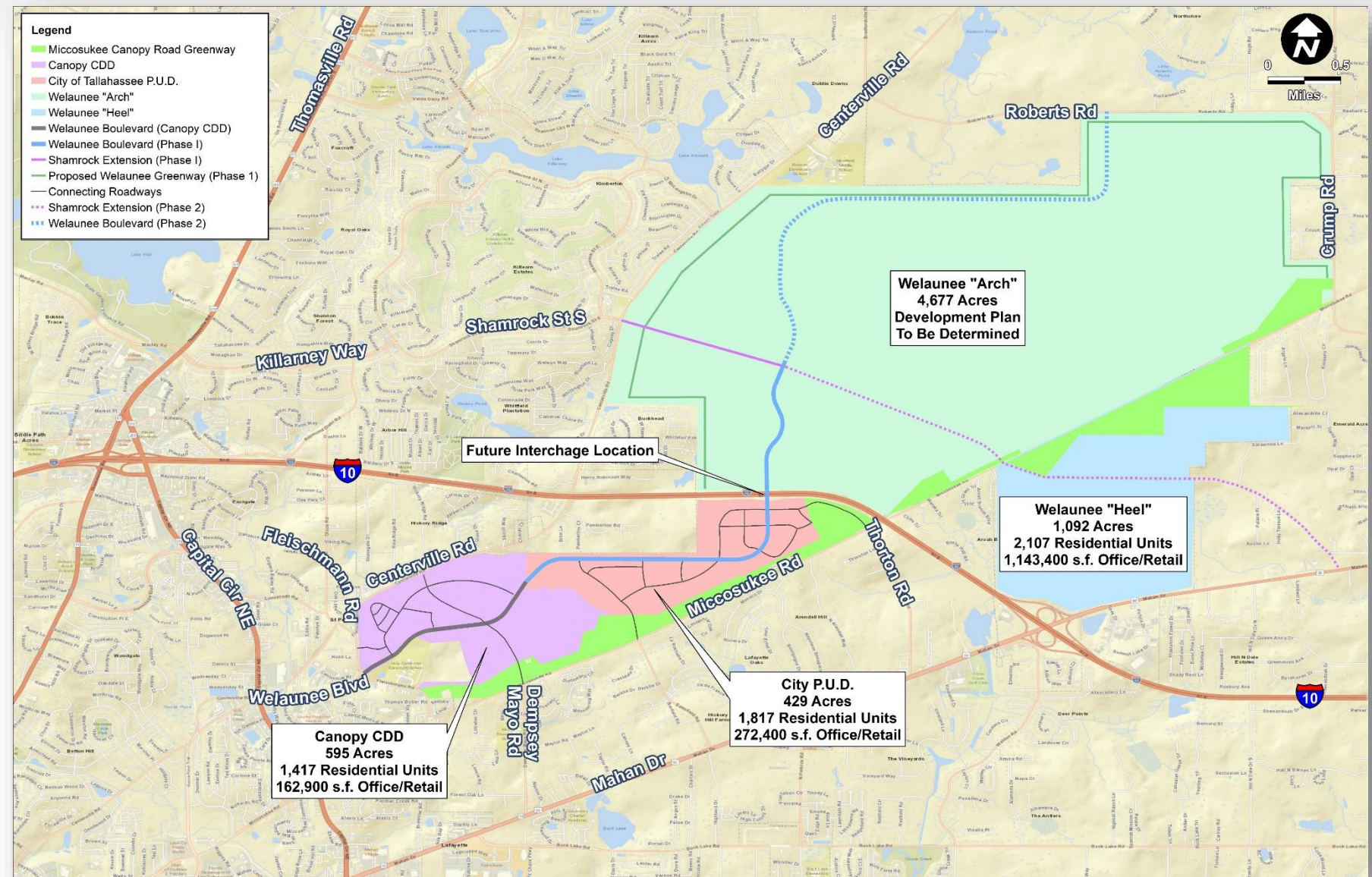


Beyond Phase 1

Phase 2

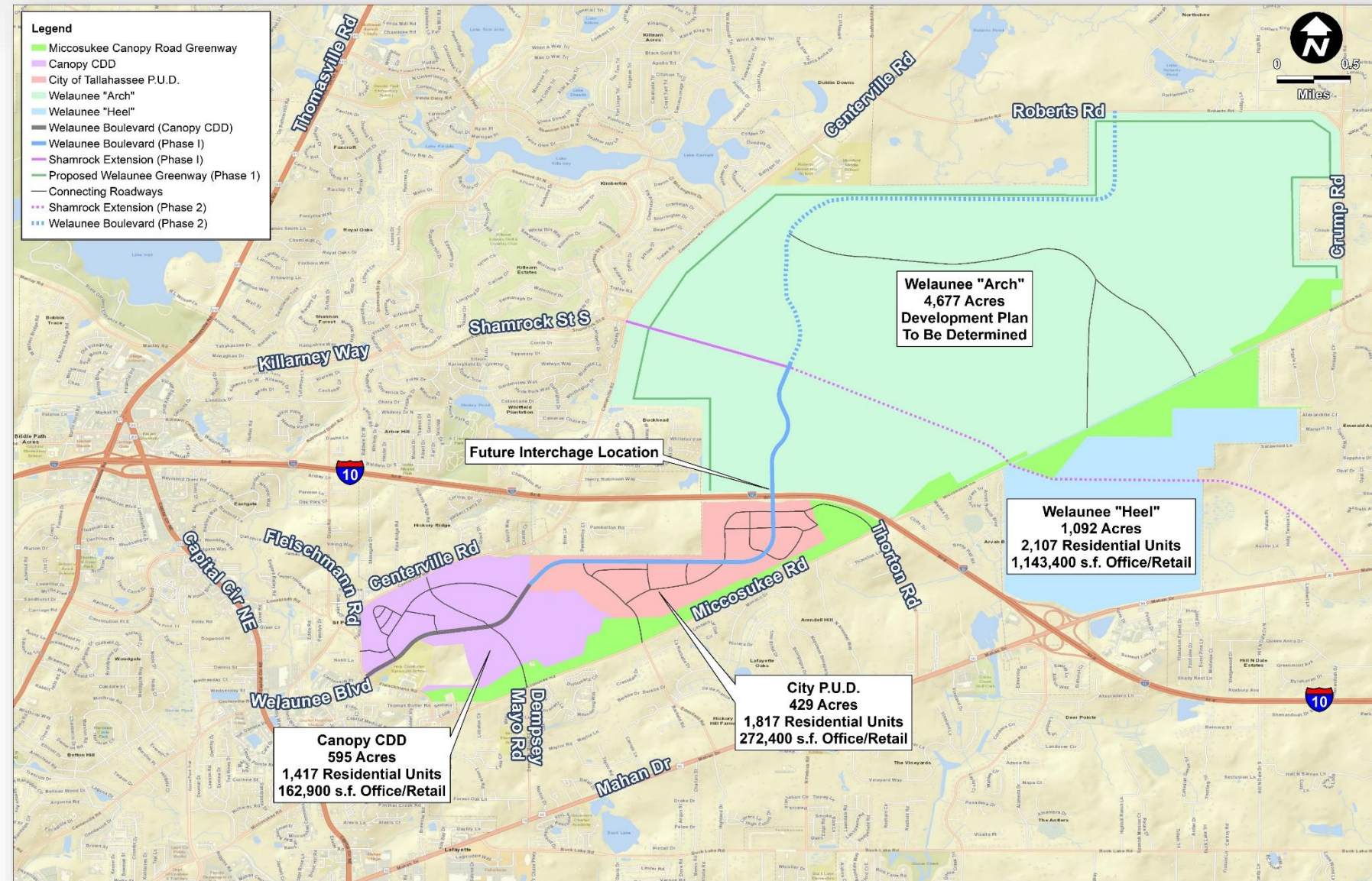
- Extension of:
 - Welaunee Boulevard
 - North to Roberts Road
 - Shamrock Street
 - East to Mahan Drive

Future I-10 Interchange



Beyond Phase 1

- Extension of:
 - Welaunee Boulevard
 - North to Roberts Road
 - Shamrock Street
 - East to Mahan Drive
- Future I-10 Interchange
- Ongoing planning includes additional connections in the “Arch”



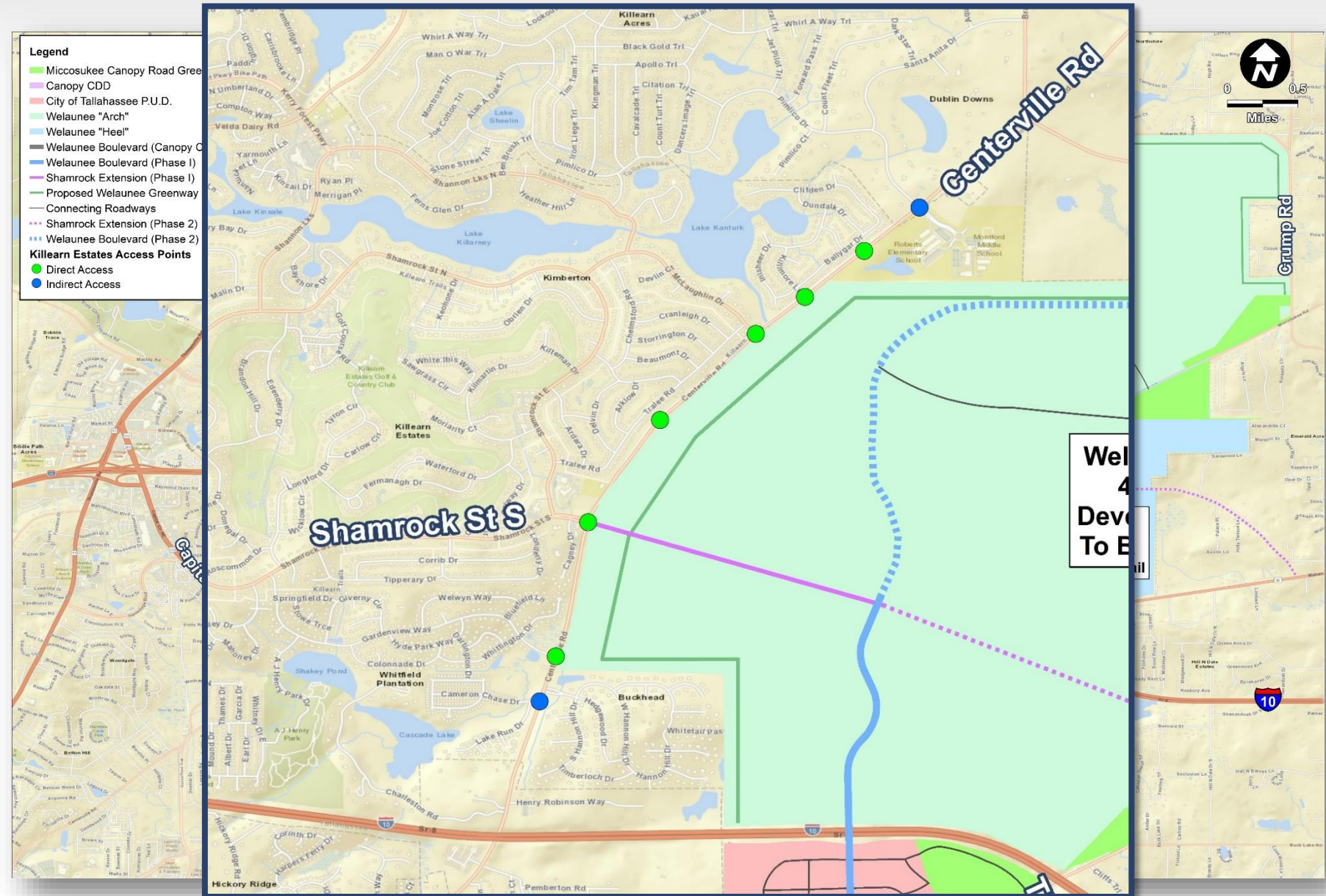
Killearn Estates: 1970

- It started with one connection to Centerville Road
 - Shamrock Street
- The beginning of 4,000 acres of growth



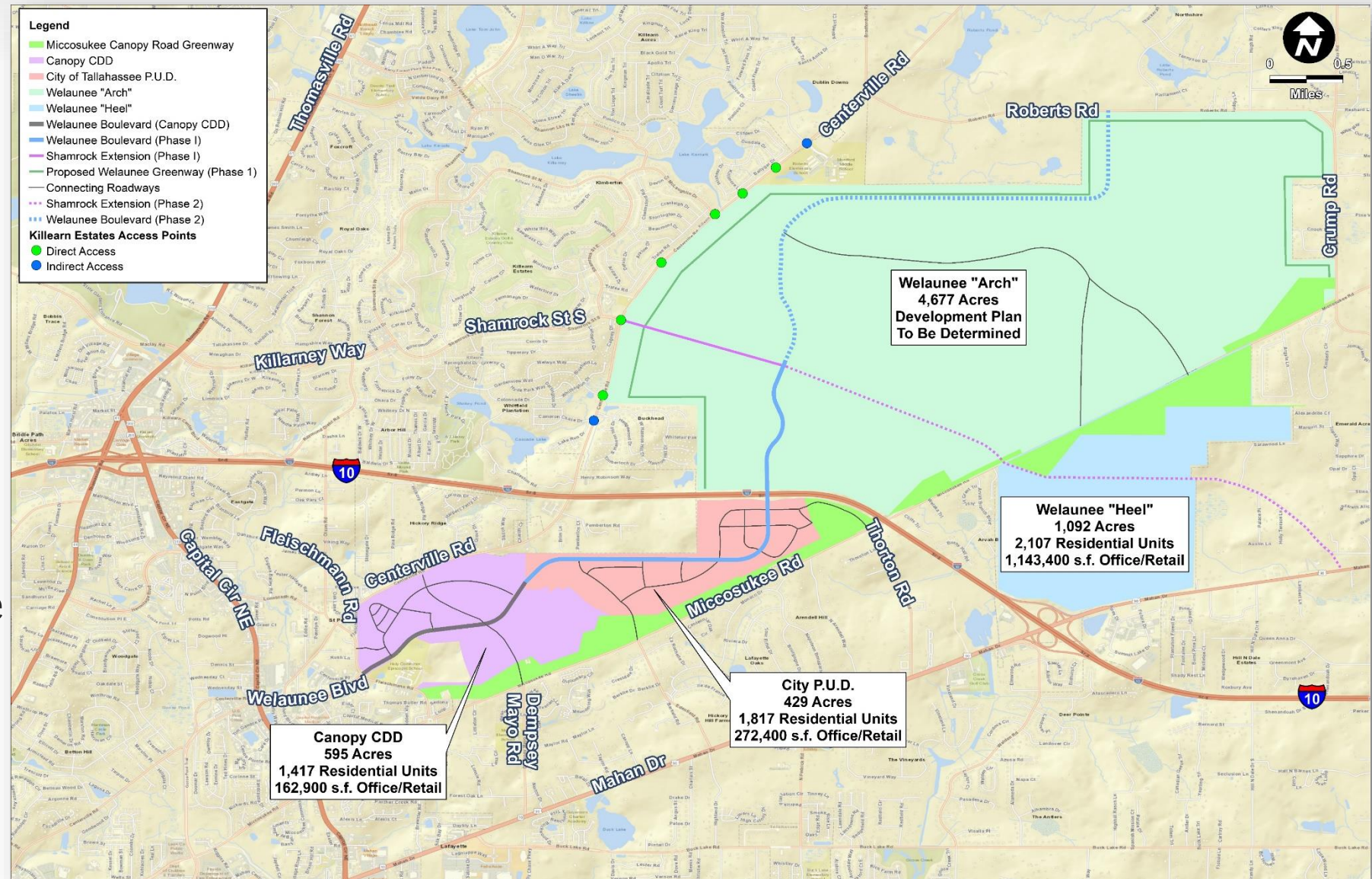
Killearn Estates Today: Connections to Centerville Road

- 6 direct connections
- 2 indirect connections



Beyond Phase 1

- Extension of:
 - Welaunee Boulevard
 - North to Roberts Road
 - Shamrock Street
 - East to Mahan Drive
- Future I-10 Interchange
- Ongoing planning includes additional connections in the Arch
- Planning will continue and additional connections are likely



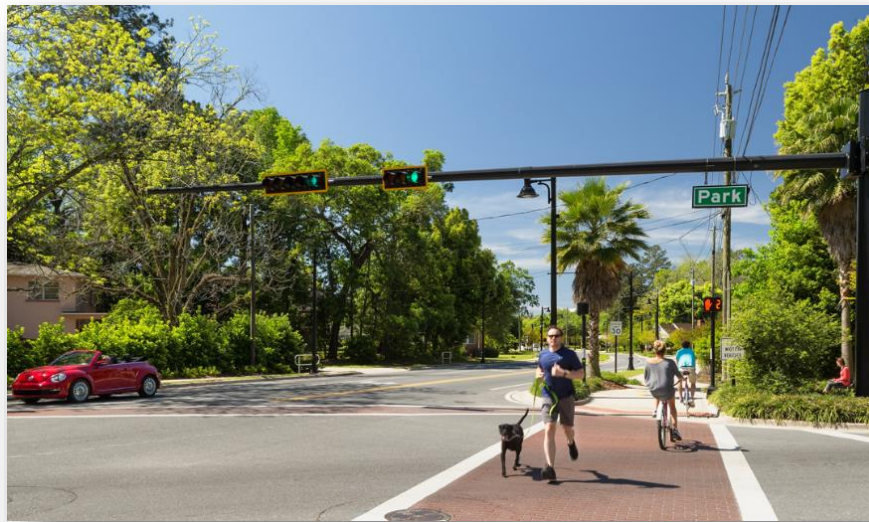
Blueprint Projects and Property Values

A track record of:

- Community Enhancements
- Neighborhood Improvements
- Increasing Property Values




FAMU Way

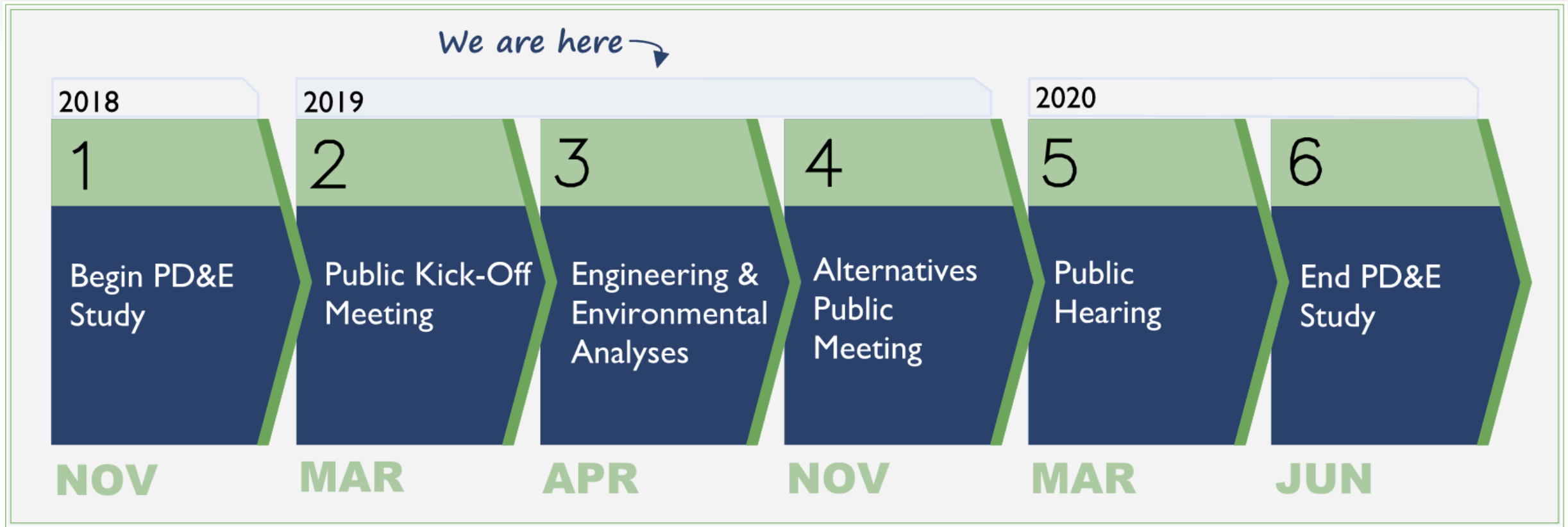


Franklin Boulevard

Top Concerns from Killearn Homes Association

- Affect on property values** ➡ *Blueprint projects have historically had a positive impact on property values.*
 - What is the traffic impact in Killearn Estates?** ➡ *Traffic and safety analyses are ongoing and to be presented this fall.*
 - The safety of children, pedestrians, drivers, and bicyclists** ➡ *Traffic and safety analyses are ongoing and to be presented this fall.*
 - Other options to relieve traffic in the northeast** ➡ *Planning will consider future connector roadways.*
- 

Project Timeline



Contact Us

For more information regarding the project, please contact:

Greg Kern, AICP
Project Manager
Blueprint Intergovernmental Agency
315 S. Calhoun Street
Tallahassee, Florida 32301
(850) 219-1060
Greg.Kern@BlueprintIA.org

Susan Emmanuel
Public Information Officer
Blueprint Intergovernmental Agency
315 S. Calhoun Street
Tallahassee, Florida 32301
(850) 219-1060
Susan.Emmanuel@BlueprintIA.org

Or visit the project website at
NEGateway.com



**We are here
to listen.**

